



Waiters

by Mary Ann Hoberman

Objectives



1

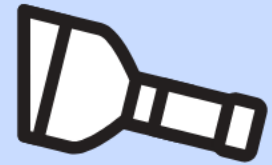
Recognize rhyming words in the poem

Generate words that rhyme with a given word

2

3

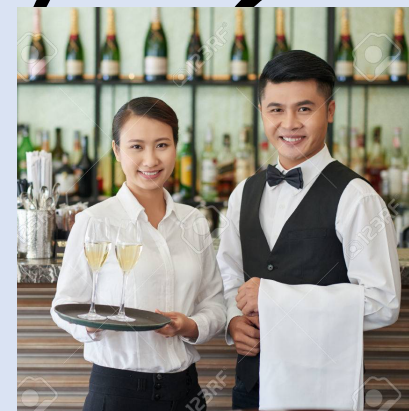
Practice reading aloud the poem with rhythm



You are in a **restaurant** *with your family...*



What *do you see?* *



Who *do you meet?* *



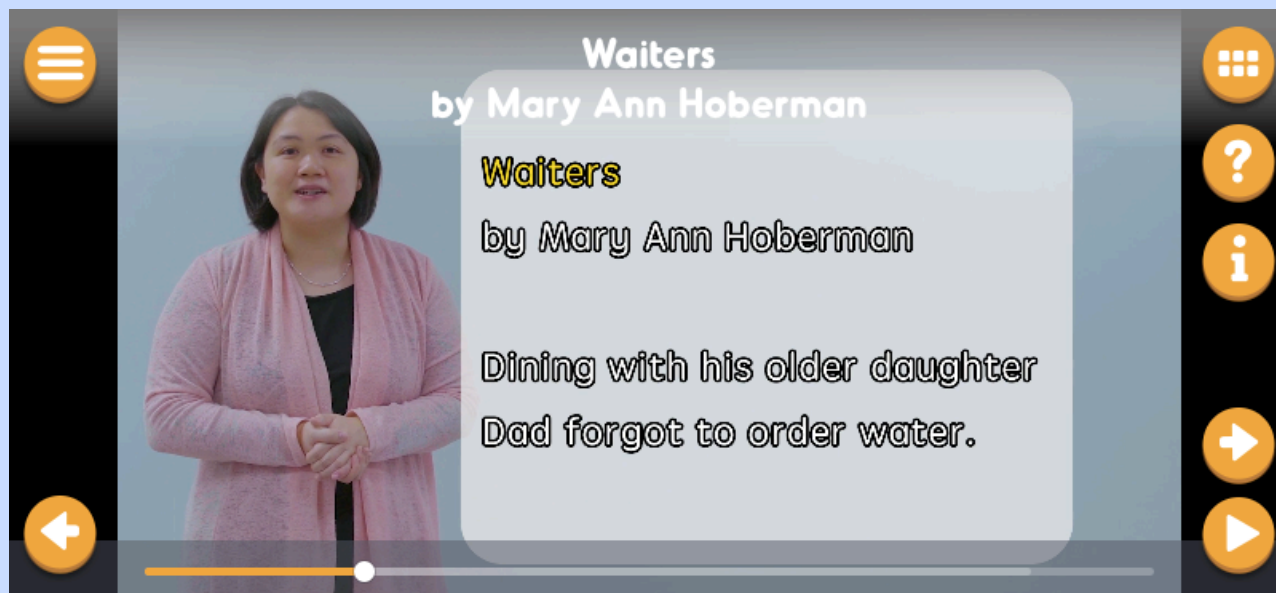
Waiters are people who serve customers at their tables in a restaurant.



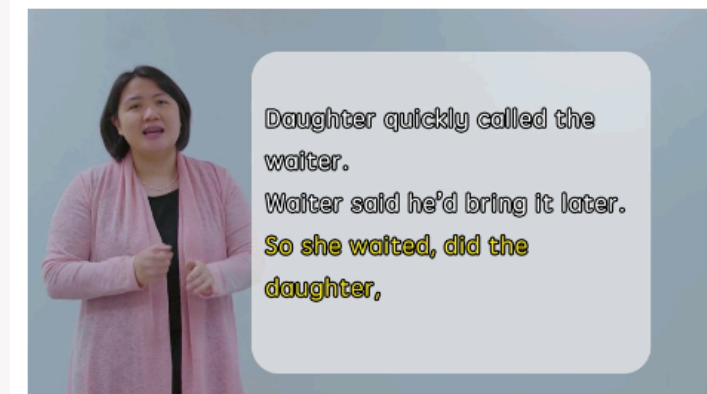


Waiters

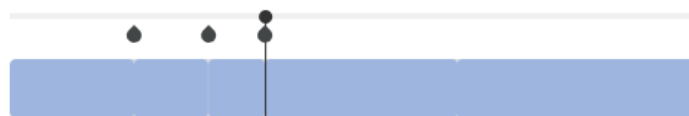
by Mary Ann Hoberman



“Activity 1: Q&A”



00:47



Total new time 02:07



MULTIPLE CHOICE QUESTION

What are the rhyming words?

→ ☐ daughter

→ ☐ waiter

☐ waited

→ ☐ later

Continue



Edpuzzle

Rhyme is a repetition
of similar sounds in two or
more words.

night kite flight
sight bite height
might light fight
tight fright site

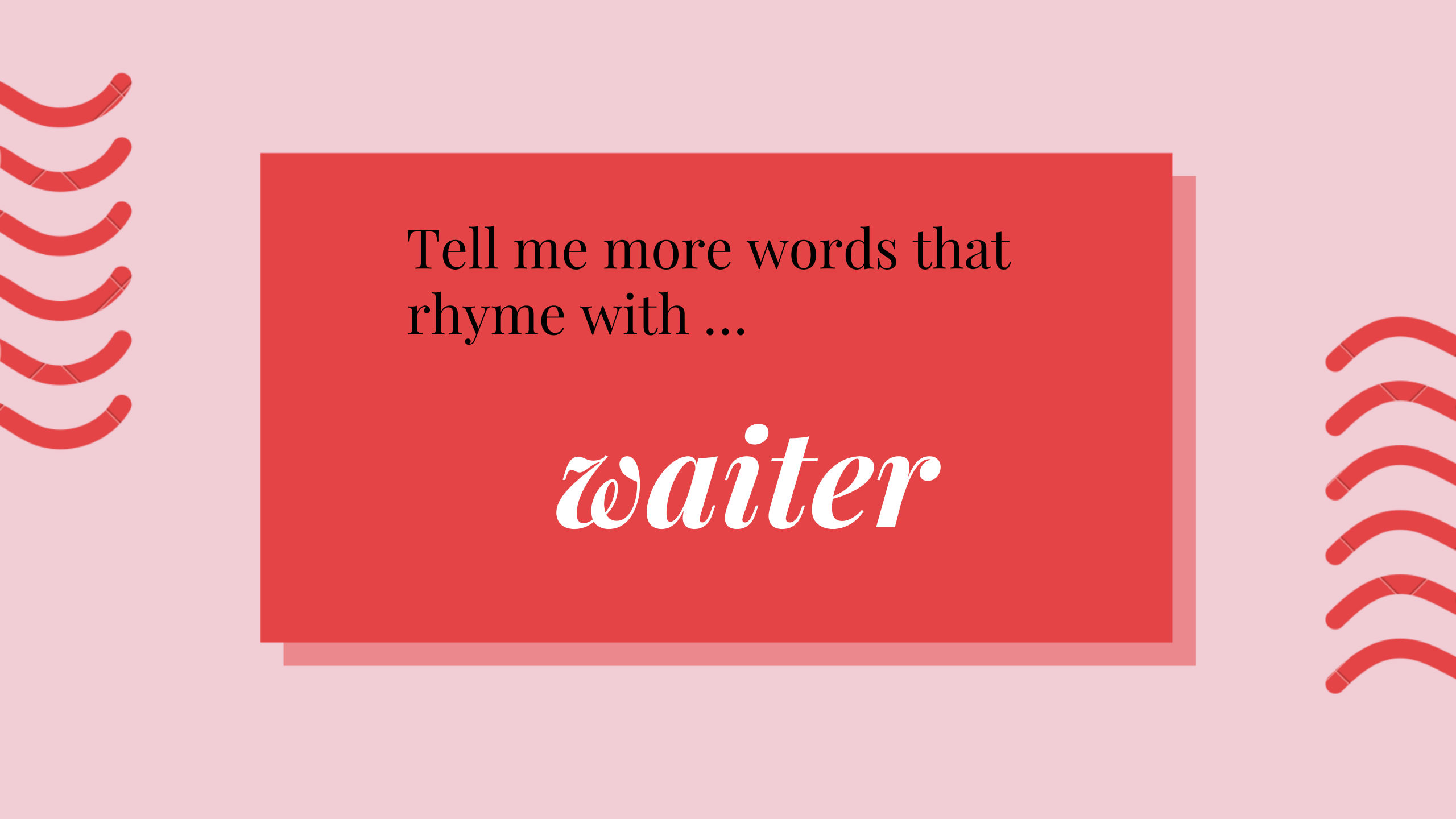


Rhyme

These rhyming pairs make the poem interesting to hear and read:

e.g. *‘daughter’* and *‘water’*
‘waiter’ and *‘later’*

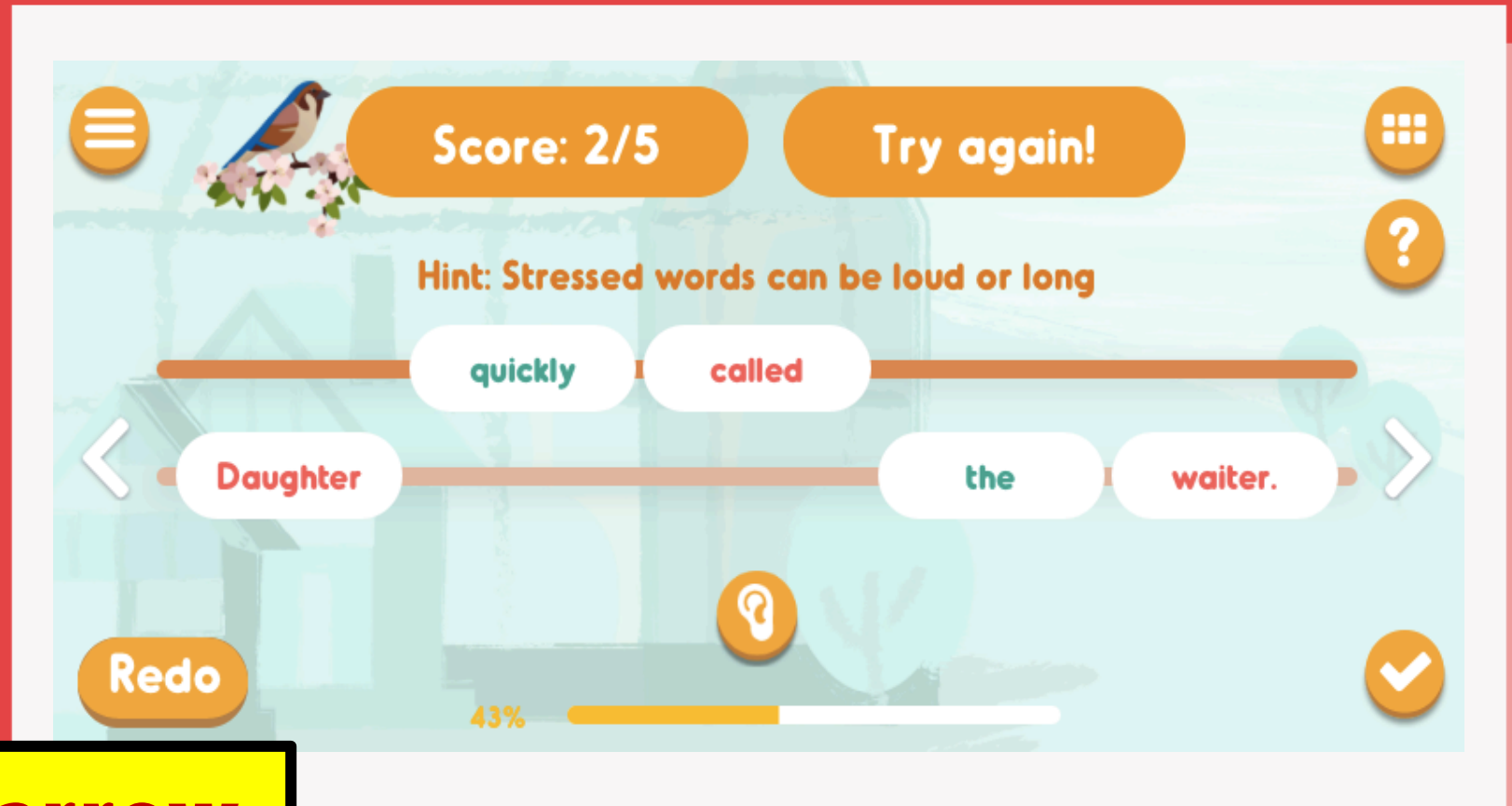
Their ending sounds are same but
the spellings can be different!



Tell me more words that
rhyme with ...

waiter

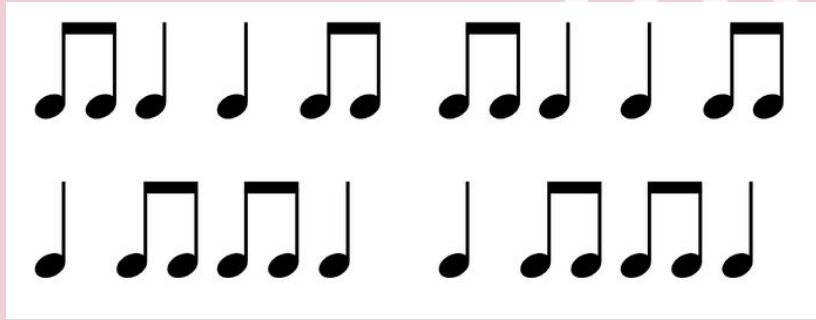
“Activity 2: ‘Tip-Tap listening’”



Blue Sparrow

Rhythm refers to the
beat and pace of a poem.





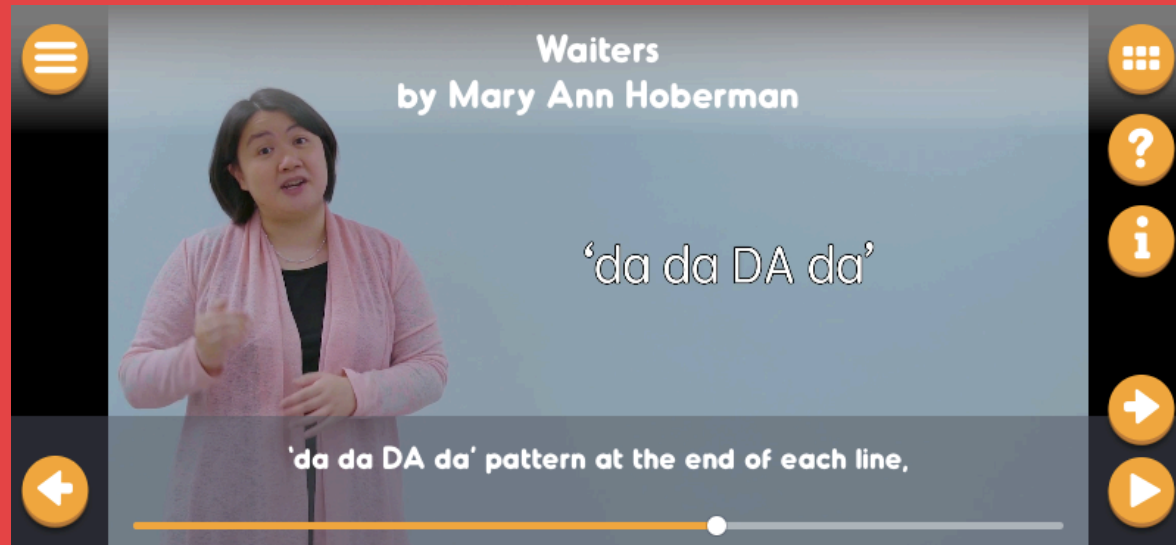
Rhythm

Rhythm can be created by the pattern of stressed and unstressed words in a line or a verse.

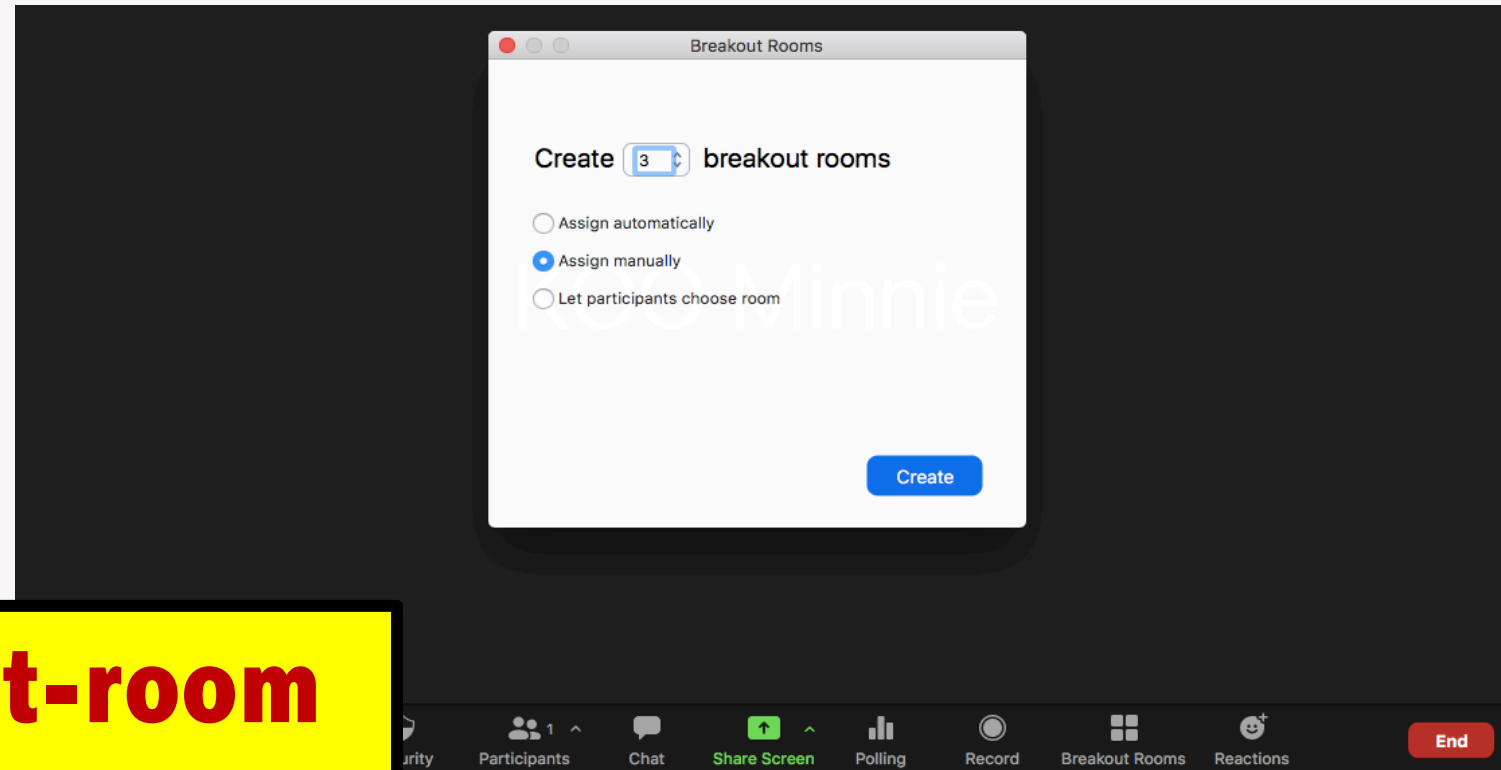
Stressed words can be loud or long!



What is the rhythm of this poem?



“Activity 3: poetry performance”



**Breakout-room
(Zoom)**

“Assignment: worksheet”

Peer-evaluation

Self-evaluation

Worksheet: *Waiters* by Mary Ann Hoberman

Name: _____ () Class: _____

Task 1: Peer-evaluation

- Perform the poem with your groupmates and rate each other's performance.

Name of the performer: _____

	Excellent 💖	Good 😊	Okay 🙂	Improvable 🤔
Pace and rhythm				
Expression				
Clarity				
Overall impression				

Comments: _____

Rhyme is the
repetition of similar
sounds in two/ more
words.

'daughter' & 'water'

1

Summary

2

Rhythm refers
to the beat and pace of
a poem.





The end